



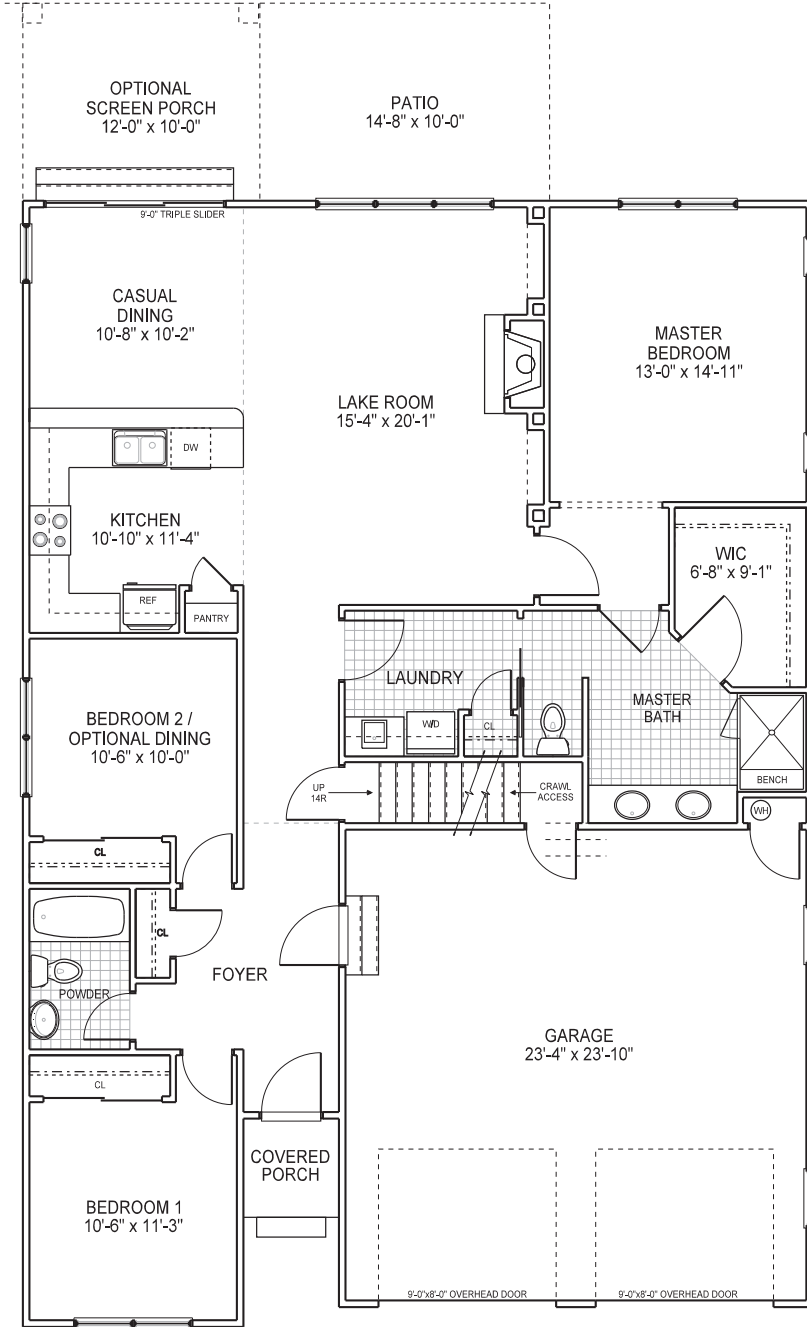
THE BRISTOL



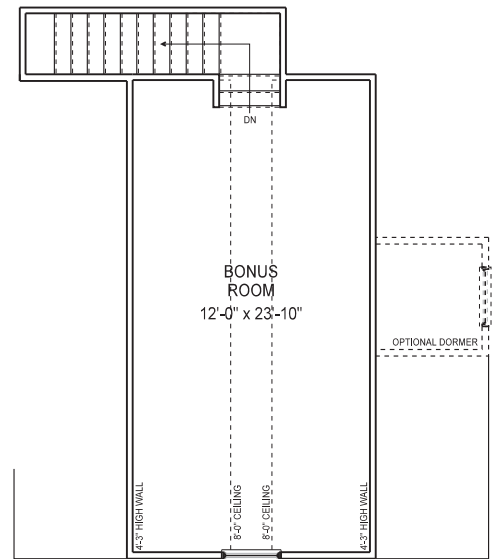
The Bristol is a unique ranch plan from Lakeside Construction that features 3 bedrooms, 2 baths, casual dining, great room (Lake Room) and a uniquely connected laundry/master bath to make housekeeping a breeze. With options including a bonus room over the garage, converting one bedroom to a formal dining room, or screened porch, there's a lot to like in the Bristol's 1,627 SF (1,928 SF as shown with optional bonus room over garage.) Available at Vista Point or on your lot!



THE BRISTOL RANCH



1,627 S.F.



301 S.F.



THE BRISTOL RANCH

Lakeside Elevation



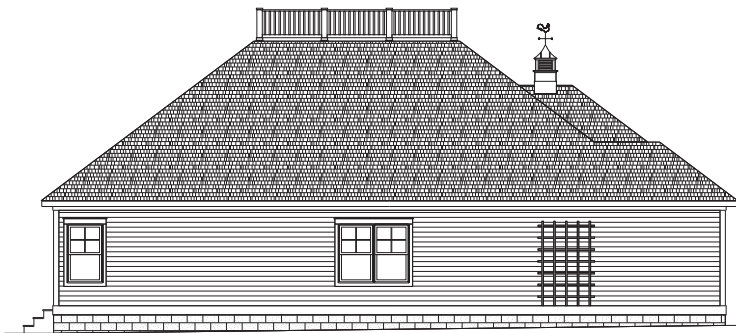
Street Side Elevation



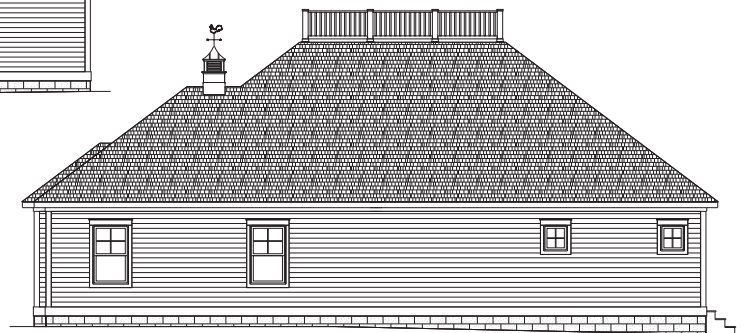
With Bonus Room Option

Standard

Side View Elevations



Left Elevation



Right Elevation